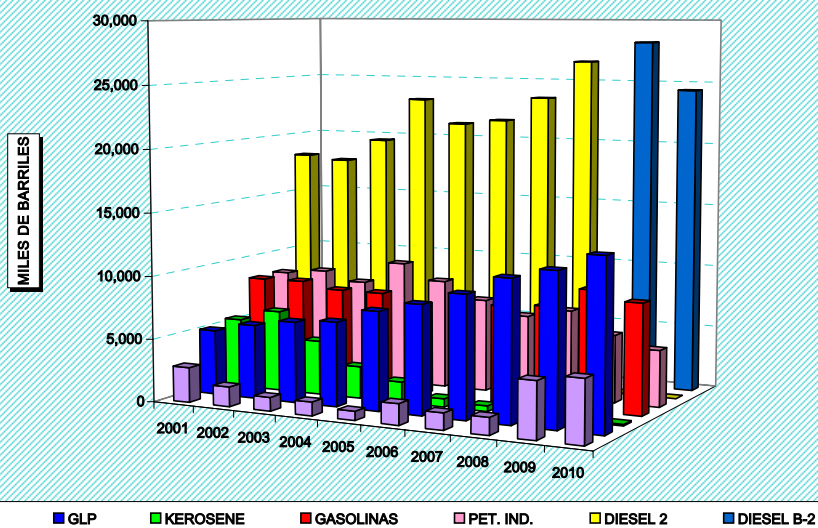


**VENTA DE DERIVADOS DE PETROLEO Y LGN  
EN EL MERCADO INTERNO, POR TIPO DE PRODUCTO  
2001 - 2010  
(MBLS)**

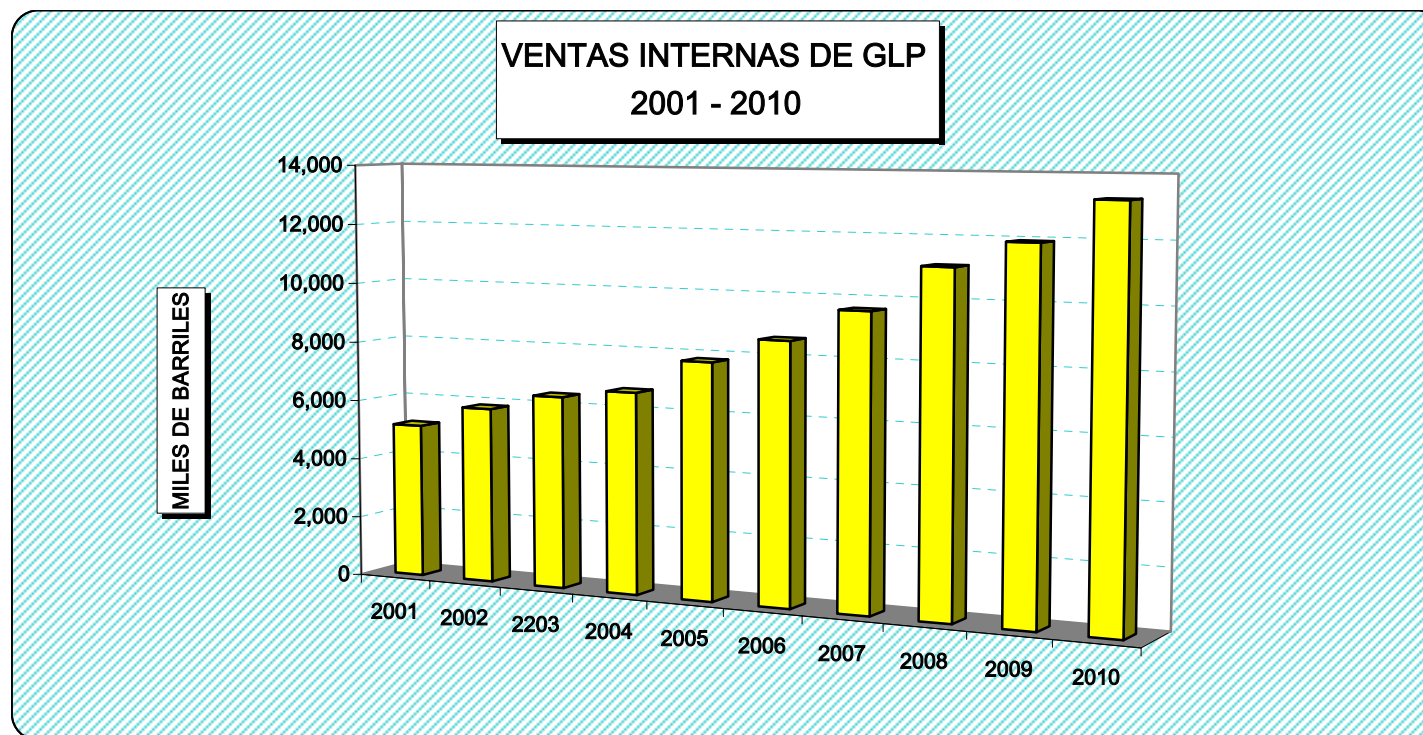
PRODUCTO	2001	2002	2003	2004	2005	2006	2007	2008	2009	2010
<b>TOTAL</b>	<b>51,084.5</b>	<b>51,173.9</b>	<b>49,312.7</b>	<b>53,192.1</b>	<b>48,982.8</b>	<b>48,938.2</b>	<b>50,815.8</b>	<b>56,306.1</b>	<b>62,106.2</b>	<b>66,171.8</b>
GAS LICUADO DE PETROLEO (GLP)	5,146.7	5,860.3	6,404.3	6,691.3	7,810.3	8,614.5	9,653.0	11,107.1	11,924.5	13,258.3
GASOLINA MOTOR 84 OCTANOS	4,469.0	4,378.3	4,024.8	4,014.3	3,939.1	4,019.2	4,300.3	4,470.6	4,909.8	4,077.0
GASOLINA MOTOR 90 OCTANOS	2,813.6	2,841.2	2,852.1	2,922.9	2,560.4	2,496.5	2,534.4	2,574.6	3,464.5	3,438.5
GASOLINA MOTOR 95 OCTANOS	478.2	540.1	473.9	432.4	387.0	386.7	444.8	504.2	610.1	708.3
GASOLINA MOTOR 97 OCTANOS	647.9	689.9	611.0	590.6	395.6	355.5	206.8	187.7	249.7	263.9
GASOLINA MOTOR 98 BA	-	-	-	-	-	34.1	193.3	194.8	233.4	244.9
GASOHOL 84	-	-	-	-	-	-	-	-	-	1,016.2
GASOHOL 90	-	-	-	-	-	-	-	-	-	619.4
GASOHOL 95	-	-	-	-	-	-	-	-	-	51.7
GASOHOL 97	-	-	-	-	-	-	-	-	-	4.8
GASOHOL 98	-	-	-	-	-	-	-	-	-	1.4
TURBO A-1 / JP-5	2,776.5	1,565.8	1,085.1	1,073.0	720.9	1,652.9	1,311.4	1,351.4	4,412.4	4,909.7
GASOLINA DE AVIACION	14.3	14.5	10.5	9.7	10.4	11.2	12.6	13.0	13.3	13.8
KEROSENE	5,508.3	6,430.6	4,316.1	2,538.8	1,652.5	654.3	447.0	334.1	270.1	115.1
DIESEL N° 2	18,283.2	17,974.9	19,799.6	23,329.7	21,398.2	21,769.9	23,690.1	26,683.8	31.8	6.5
DIESEL B-2	-	-	-	-	-	-	-	-	28,192.8	24,381.6
DIESEL B-2 S-50	-	-	-	-	-	-	-	-	-	6,068.6
PETROLEO RESIDUAL N° 5	11.0	22.7	23.2	22.9	43.3	23.9	11.6	3.6	-	20.4
PETROLEO RESIDUAL N° 6	3,358.8	3,865.0	3,541.2	4,081.4	2,963.6	2,361.9	2,175.5	2,210.3	1,560.4	1,418.5
PETROLEO RESIDUAL 500	5,035.9	4,919.6	4,545.9	5,801.9	5,649.9	4,952.4	4,101.7	4,709.2	3,733.1	2,889.8
BUNKERS / I.F.O. / M.G.O.	63.0	47.1	24.0	23.4	38.7	42.0	66.5	123.8	108.8	161.9
ASFALTO LIQUIDO	183.3	306.7	202.2	182.8	169.1	207.7	204.9	245.5	297.0	370.5
ASFALTO SOLIDO	445.6	402.6	287.6	707.5	425.4	520.9	632.3	729.8	1,197.8	1,394.4
HEXANO Y SOLVENTES	381.1	535.6	703.5	506.3	541.3	506.7	560.9	278.0	320.3	297.0
ACIDO NAFTENICO	0.2	0.3	0.2	0.2	0.3	0.2	0.2	0.2	0.2	0.2
PETROLEO CRUDO REDUCIDO	1,255.2	628.2	268.4	-	-	-	-	-	-	-
OTROS PRODUCTOS	212.9	150.5	139.2	262.9	276.7	327.6	268.5	584.5	576.2	439.5

**VENTAS INTERNAS DE DERIVADOS DE PETROLEO, POR TIPO DE PRODUCTO  
2001 - 2010**



**VENTA DE GAS LICUADO DE PETROLEO EN EL MERCADO INTERNO**  
 2001 - 2010  
 (MBLS)

PRODUCTO	2001	2002	2003	2004	2005	2006	2007	2008	2009	2010
GAS LICUADO DE PETROLEO (GLP)	5,146.7	5,860.3	6,404.3	6,691.3	7,810.3	8,614.5	9,653.0	11,107.1	11,924.5	13,258.3



**MERCADO INTERNO**  
**ESTRUCTURA DE PRECIOS DE LOS COMBUSTIBLES**  
**PRECIOS VIGENTES DICIEMBRE 2010**  
(Soles por Galón)

COMBUSTIBLES	Precio Neto Petroperú (30/12/2010)	IMPUESTOS			Precio Ex-Planta (Callao)	Margen comercial (1)	Precio al público (*)
		Al Rodaje 8%	Selectivo al Consumo	General a las Ventas (19%)			
<b>Gas Licuado de Petróleo (**)</b>	<b>1.78</b>	<b>0.00</b>	<b>0.04</b>	<b>0.35</b>	<b>2.17</b>	<b>1.37</b>	<b>3.54</b>
<b>Gasolina 97 Oct. - Sin Plomo</b>	<b>7.47</b>	<b>0.60</b>	<b>2.27</b>	<b>1.96</b>	<b>12.30</b>	<b>2.61</b>	<b>14.91</b>
<b>Gasolina 95 Oct. - Sin Plomo</b>	<b>7.35</b>	<b>0.59</b>	<b>2.07</b>	<b>1.90</b>	<b>11.91</b>	<b>2.40</b>	<b>14.31</b>
<b>Gasolina 90 Oct. - Sin Plomo</b>	<b>6.86</b>	<b>0.55</b>	<b>1.78</b>	<b>1.75</b>	<b>10.93</b>	<b>1.02</b>	<b>11.95</b>
<b>Gasolina 84 Oct. - Sin Plomo</b>	<b>6.64</b>	<b>0.53</b>	<b>1.36</b>	<b>1.62</b>	<b>10.15</b>	<b>0.88</b>	<b>11.03</b>
<b>Biodiesel B2 (***)</b>	<b>7.40</b>		<b>1.44</b>	<b>1.68</b>	<b>10.52</b>	<b>0.72</b>	<b>11.24</b>
<b>Petróleo Industrial N° 6</b>	<b>5.61</b>		<b>0.52</b>	<b>1.16</b>	<b>7.29</b>		
<b>Petróleo Industrial 500</b>	<b>5.51</b>		<b>0.50</b>	<b>1.14</b>	<b>7.15</b>		

(1) Los Márgenes son libres, los valores son estimados (DGH). Incluye el I.G.V. sobre el Margen.

(\*) Fuente: INEI = Precios a Diciembre 2010

(\*\*) Precio expresado en soles/kilogramo

**EVOLUCION DE LOS PRECIOS PROMEDIO DE VENTA DE COMBUSTIBLES AL CONSUMIDOR  
EN LIMA METROPOLITANA**

**2001 - 2010**

2001	84 OCT.	90 OCT.	95 OCT.	97 OCT.	DIESEL 2	KEROSENE	GLP (Balón de 10 kg.) 1/
ENERO	7.87	8.80	9.86	10.34	6.92	6.67	33.01
FEBRERO	7.88	8.81	9.89	10.35	6.88	6.67	33.18
MARZO	7.89	8.87	10.03	10.48	6.56	6.52	32.75
ABRIL	7.75	8.85	10.14	10.61	6.40	6.34	31.98
MAYO	8.12	9.22	10.46	11.03	6.48	6.36	31.71
JUNIO	8.18	9.27	10.50	11.09	6.64	6.44	31.62
JULIO	7.85	8.85	10.07	10.52	6.54	6.37	31.05
AGOSTO	7.49	8.49	9.65	10.06	6.33	6.24	30.08
SEPTIEMBRE	7.48	8.52	9.63	10.15	6.28	6.17	29.61
OCTUBRE	7.25	8.24	9.33	9.90	6.17	6.01	29.14
NOVIEMBRE	7.02	7.95	9.05	9.64	6.06	5.87	28.92
DICIEMBRE	6.96	7.86	8.94	9.53	5.93	5.72	27.38

2002	84 OCT.	90 OCT.	95 OCT.	97 OCT.	DIESEL 2	KEROSENE	GLP (Balón de 10 kg.) 1/
ENERO	6.98	7.93	8.98	9.58	5.90	5.59	25.71
FEBRERO	6.98	7.96	9.00	9.61	5.90	5.57	25.44
MARZO	7.19	8.22	9.28	9.90	6.01	5.63	25.36
ABRIL	7.76	8.87	9.90	10.56	6.42	5.81	26.65
MAYO	7.82	8.92	9.99	10.62	6.45	5.82	27.25
JUNIO	7.81	8.91	10.00	10.62	6.44	5.81	27.67
JULIO	7.81	8.90	9.99	10.62	6.55	5.87	27.81
AGOSTO	7.80	8.90	9.99	10.62	6.64	5.99	28.63
SEPTIEMBRE	8.03	9.18	10.35	11.00	6.76	6.78	29.21
OCTUBRE	8.03	9.21	10.42	11.07	6.78	6.93	29.84
NOVIEMBRE	8.03	9.21	10.41	11.07	6.80	6.93	30.28
DICIEMBRE	8.04	9.21	10.41	11.07	6.86	6.89	30.47

2003	84 OCT.	90 OCT.	95 OCT.	97 OCT.	DIESEL 2	KEROSENE	GLP (Balón de 10 kg.) 1/
ENERO	8.23	9.21	10.42	11.06	7.13	6.91	32.60
FEBRERO	8.44	9.52	10.83	11.53	7.32	7.04	33.18
MARZO	9.18	10.38	11.87	12.61	7.63	7.35	33.53
ABRIL	9.37	10.52	12.04	12.78	7.65	7.47	33.25
MAYO	8.76	9.92	11.59	12.21	7.47	7.44	32.19
JUNIO	8.61	9.75	11.38	11.96	7.43	7.41	31.55
JULIO	8.41	9.50	11.04	11.64	7.39	7.38	31.43
AGOSTO	8.42	9.53	11.03	11.66	7.42	7.39	31.64
SEPTIEMBRE	8.90	10.19	11.59	12.19	7.41	7.57	31.66
OCTUBRE	8.83	10.14	11.55	12.18	7.41	7.66	31.67
NOVIEMBRE	8.80	10.10	11.51	12.14	7.42	7.70	31.73
DICIEMBRE	8.83	10.12	11.48	12.11	7.69	7.79	31.77

2004	84 OCT.	90 OCT.	95 OCT.	97 OCT.	DIESEL 2	KEROSENE	GLP (Balón de 10 kg.) 1/
ENERO	9.02	10.13	11.46	12.12	7.85	7.98	32.62
FEBRERO	9.12	10.18	11.57	12.22	7.86	8.06	33.31
MARZO	9.35	10.39	11.91	12.55	8.01	8.18	33.75
ABRIL	9.53	10.45	11.97	12.61	8.14	8.27	33.99
MAYO	9.63	10.66	12.20	12.88	8.27	8.34	34.07
JUNIO	9.73	10.96	12.49	13.21	8.41	8.48	34.31
JULIO	9.73	10.93	12.45	13.17	8.41	8.53	36.21
AGOSTO	9.75	11.00	12.62	13.34	8.53	8.61	36.22
SEPTIEMBRE	9.76	11.07	12.86	13.58	8.81	8.73	36.07
OCTUBRE	10.01	11.40	13.49	14.21	9.00	8.96	36.69
NOVIEMBRE	10.40	11.78	13.91	14.57	9.30	9.34	37.02
DICIEMBRE	10.39	11.76	13.87	14.52	9.26	9.37	36.62

**EVOLUCION DE LOS PRECIOS PROMEDIO DE VENTA DE COMBUSTIBLES AL CONSUMIDOR  
EN LIMA METROPOLITANA**

**2001 - 2010**

2005	84 OCT.	90 OCT.	95 OCT.	97 OCT.	DIESEL 2	KEROSENE	GLP (Balón de 10 kg.) 1/
ENERO	10.39	11.73	13.80	14.45	9.25	9.36	35.65
FEBRERO	10.36	11.66	13.65	14.28	9.24	9.41	35.00
MARZO	10.44	11.74	13.71	14.31	9.43	9.48	35.38
ABRIL	10.59	11.87	13.96	14.50	9.73	9.61	35.60
MAYO	10.59	11.86	14.08	14.60	9.83	9.64	35.56
JUNIO	10.73	11.99	14.24	14.74	9.86	9.74	35.56
JULIO	10.91	12.16	14.44	14.92	9.94	9.89	31.96
AGOSTO	11.17	12.54	14.68	15.25	10.14	10.50	31.45
SEPTIEMBRE	11.58	13.00	15.09	15.70	10.50	11.12	31.42
OCTUBRE	11.65	13.05	15.15	15.80	10.54	11.20	32.00
NOVIEMBRE	11.66	13.04	15.14	15.80	10.55	11.23	32.69
DICIEMBRE	11.49	12.84	14.89	15.61	10.54	11.33	32.62

2006	84 OCT.	90 OCT.	95 OCT.	97 OCT.	DIESEL 2	KEROSENE	GLP (Balón de 10 kg.) 1/
ENERO	11.48	12.82	14.90	15.60	10.53	11.34	32.55
FEBRERO	11.49	12.81	14.87	15.54	10.53	11.28	32.67
MARZO	11.48	12.81	14.86	15.54	10.53	11.27	32.72
ABRIL	11.53	12.85	14.88	15.56	10.57	11.29	32.77
MAYO	11.70	13.00	15.03	15.72	10.74	11.48	32.78
JUNIO	11.69	12.99	15.04	15.73	10.73	11.55	32.77
JULIO	11.67	12.99	15.02	15.70	10.73	11.61	32.76
AGOSTO	11.69	13.14	15.29	15.97	10.77	11.68	32.76
SEPTIEMBRE	11.43	12.96	15.23	15.89	10.70	11.73	32.73
OCTUBRE	10.75	12.29	14.57	15.29	10.47	11.74	23.72
NOVIEMBRE	10.60	12.19	14.47	15.15	10.39	11.70	32.72
DICIEMBRE	10.33	12.07	14.37	15.05	10.25	11.58	32.71

2007	84 OCT.	90 OCT.	95 OCT.	97 OCT.	DIESEL 2	KEROSENE	GLP (Balón de 10 kg.) 1/
ENERO	10.31	11.98	14.18	14.90	10.12	11.57	32.71
FEBRERO	10.22	11.74	13.56	14.33	9.90	11.54	32.78
MARZO	10.22	11.74	13.54	14.31	9.89	11.47	33.07
ABRIL	10.23	11.76	13.58	14.37	9.89	11.48	33.09
MAYO	10.76	12.47	14.64	15.45	10.30	11.84	33.13
JUNIO	11.59	13.29	16.06	16.90	10.63	12.13	33.12
JULIO	11.59	13.28	16.08	16.90	10.63	12.16	33.10
AGOSTO	11.59	13.28	16.08	16.89	10.63	12.18	33.14
SEPTIEMBRE	11.59	13.28	16.08	16.89	10.62	12.19	33.13
OCTUBRE	11.58	13.26	16.04	16.86	10.63	12.21	33.14
NOVIEMBRE	11.58	13.26	15.99	16.82	10.62	12.25	33.14
DICIEMBRE	11.58	13.25	15.97	16.81	10.62	12.25	33.14

2008	84 OCT.	90 OCT.	95 OCT.	97 OCT.	DIESEL 2	KEROSENE	GLP (Balón de 10 kg.) 1/
ENERO	11.58	13.25	15.97	16.80	10.62	12.25	33.14
FEBRERO	11.58	13.25	15.97	16.79	10.62	12.25	33.14
MARZO	11.59	13.26	15.98	16.81	10.62	12.24	33.14
ABRIL	11.59	13.26	15.99	16.81	10.62	12.27	33.30
MAYO	11.59	13.26	15.99	16.81	10.62	12.27	33.30
JUNIO	12.10	13.87	16.64	17.42	11.03	12.65	33.36
JULIO	12.14	13.91	16.69	17.45	11.05	12.74	33.45
AGOSTO	12.54	13.91	16.68	17.45	11.36	12.75	33.45
SEPTIEMBRE	12.79	13.91	16.68	17.45	11.55	12.77	33.45
OCTUBRE	12.79	13.91	16.68	17.45	11.55	12.78	33.53
NOVIEMBRE	11.65	12.74	15.72	16.40	11.41	12.78	33.52
DICIEMBRE	10.92	11.99	15.04	15.67	11.18	12.77	33.41

**EVOLUCION DE LOS PRECIOS PROMEDIO DE VENTA DE COMBUSTIBLES AL CONSUMIDOR  
EN LIMA METROPOLITANA**

**2001 - 2010**

2009	84 OCT.	90 OCT.	95 OCT.	97 OCT.	DIESEL B2	KEROSENE	GLP (Balón de 10 kg.) 1/
ENERO	9.82	10.90	13.91	14.49	10.30	11.90	32.99
FEBRERO	8.57	9.67	12.68	13.22	9.38	10.83	32.54
MARZO	8.49	9.57	12.61	13.17	9.30	10.63	32.49
ABRIL	8.49	9.57	12.60	13.17	9.30	10.59	32.16
MAYO	8.48	9.56	12.59	13.17	9.29	10.50	31.80
JUNIO	8.48	9.55	12.58	13.17	9.29	10.52	31.96
JULIO	8.48	9.55	12.58	13.16	9.29	10.54	32.26
AGOSTO	8.48	9.55	12.58	13.16	9.29	10.54	32.19
SEPTIEMBRE	8.47	9.56	12.58	13.17	9.29	10.54	32.60
OCTUBRE	8.47	9.56	12.58	13.18	9.29	10.54	32.65
NOVIEMBRE	8.47	9.56	12.58	13.18	9.29	10.54	32.56
DICIEMBRE	8.84	9.92	13.06	13.62	9.38	10.85	32.49

2010	84 OCT.	90 OCT.	95 OCT.	97 OCT.	DIESEL B2	KEROSENE	GLP (Balón de 10 kg.) 1/
ENERO	9.50	10.60	13.13	13.69	10.17	-	33.00
FEBRERO	9.53	10.63	13.13	13.68	10.08	-	33.28
MARZO	9.53	10.62	13.13	13.68	10.10	-	33.27
ABRIL	9.68	10.78	13.35	13.90	10.26	-	33.26
MAYO	10.19	11.33	14.08	14.64	10.80	-	33.48
JUNIO	10.26	11.35	14.05	14.62	10.79	-	33.58
JULIO	10.67	11.52	13.81	14.44	10.74	-	34.27
AGOSTO	10.67	11.50	13.78	14.43	10.74	-	34.34
SEPTIEMBRE	10.60	11.39	13.59	14.21	10.73	-	34.94
OCTUBRE	10.67	11.47	13.70	14.33	10.81	-	35.05
NOVIEMBRE	11.02	11.94	14.28	14.89	11.23	-	35.22
DICIEMBRE	11.03	11.95	14.31	14.91	11.24	-	35.38

Precios expresados en nuevos soles por galón.

1/ La serie de precios está transformada a Nuevos Soles por balón de 10 Kilogramos.

Fuente: INEI-DTIE-Dirección Ejecutiva de Índices de Precios

**BALANZA COMERCIAL**  
**ENERO - DICIEMBRE**  
**2010**

EXPORTACIONES FOB	EMPRESA						2010			
	PRODUCTO (MBLS)	RELAPASA	PETROPERU	PLUSPETROL	MOBIL	OTROS	TOTAL	MBLS	US\$ / BL	MUS \$
Crudo										
Crudo	-	-	6,911.21	-	-	-	6,911.21	6,911.21	73.08	505,067.28
Gases										
Gas Natural / LGN	-	-	-	-	21,741.32	-	21,741.32	21,741.32	12.35	268,503.35
GLP	-	-	-	-	67.73	-	67.73	67.73	79.84	5,407.60
Butano	-	-	1,250.59	-	-	-	1,250.59	1,250.59	61.63	77,073.18
Propano	-	-	3,132.78	-	6.61	-	3,139.39	3,139.39	49.41	155,110.45
Gasolinas										
Nafta Virg/Craqueda/Gasol.Nat	1,937.35	3,649.09	9,003.04	-	-	-	14,589.48	14,589.48	79.61	1,161,457.18
Gasolina Motor	-	-	-	-	-	-	-	-	-	-
Gasolina con Alcohol	-	-	-	-	0.15	-	0.15	0.15	7.52	1.13
Gasolina Aviación 100 LL	-	3.53	-	-	-	-	3.53	3.53	190.04	671.26
Destilados Medios										
Turbo Jet A-1 / Keroturbo	1,605.20	439.39	73.36	1,275.33	174.58	-	3,567.85	3,567.85	101.24	361,207.41
Material de Corte (Gasolls)	-	-	-	-	-	-	-	-	-	-
D2	79.41	13.51	-	-	-	-	92.92	92.92	-	8,770.22
D2 - B2 / BA -Diesel 2-50 PPM	202.36	15.64	-	-	1.08	-	219.07	219.07	84.67	18,549.70
MGO / Bunkers	688.16	0.41	-	-	-	-	688.57	688.57	84.31	58,051.49
Turbo JP -5	-	-	-	-	-	-	-	-	-	-
Residuales										
Residual 6	83.30	3,040.61	-	-	54.85	-	3,178.75	3,178.75	71.09	225,982.78
Fuel Oils	2,151.11	42.11	-	-	8.69	-	2,201.91	2,201.91	75.82	166,959.28
Heavy Fuel Oil	2,974.66	257.65	-	-	-	-	3,232.31	3,232.31	66.04	213,448.54
Otros										
Solvente 1	-	7.08	-	-	-	-	7.08	7.08	89.09	630.75
Solvente 3	-	5.80	-	-	0.24	-	6.04	6.04	109.63	662.18
Acido Nafténico	-	-	-	-	-	-	-	-	-	-
<b>SUBTOTAL</b>	<b>9,721.54</b>	<b>7,474.82</b>	<b>20,370.98</b>	<b>1,275.33</b>	<b>22,083.25</b>	<b>60,925.91</b>	<b>60,925.91</b>	<b>52.98</b>	<b>3,227,553.77</b>	
<b>PRODUCTO (MBLS)</b>	<b>CASTROL</b>	<b>TEXACO ISOPETROL</b>	<b>MOBIL</b>	<b>SHELL</b>	<b>OTROS</b>	<b>TOTAL</b>	<b>MBLS</b>	<b>US\$ / BL</b>	<b>MUS \$</b>	
Bases Lubricantes	-	-	0.43	0.53	0.01	0.97	0.97	214.98	209.02	
Aceites Lubricantes	-	8.25	74.29	55.18	31.05	168.76	168.76	204.65	34,536.19	
<b>SUBTOTAL</b>	<b>-</b>	<b>8.25</b>	<b>74.72</b>	<b>55.71</b>	<b>31.05</b>	<b>169.73</b>	<b>169.73</b>	<b>204.71</b>	<b>34,745.21</b>	
<b>PRODUCTO (MBLS)</b>	<b>CASTROL</b>	<b>TEXACO ISOPETROL</b>	<b>MOBIL</b>	<b>SHELL</b>	<b>OTROS</b>	<b>TOTAL</b>	<b>MBLS</b>	<b>US\$ / BL</b>	<b>MUS \$</b>	
Grasas Lubricantes	-	0.35	0.69	0.55	1.65	3.24	3.24	285.57	924.54	
<b>SUBTOTAL</b>	<b>-</b>	<b>0.35</b>	<b>0.69</b>	<b>0.55</b>	<b>1.65</b>	<b>3.24</b>	<b>3.24</b>	<b>285.57</b>	<b>924.54</b>	
<b>TOTAL EXPORTACIONES FOB</b>							<b>61,098.87</b>	<b>53.41</b>	<b>3,263,223.51</b>	

**BALANZA COMERCIAL**  
**ENERO - DICIEMBRE**  
**2010**

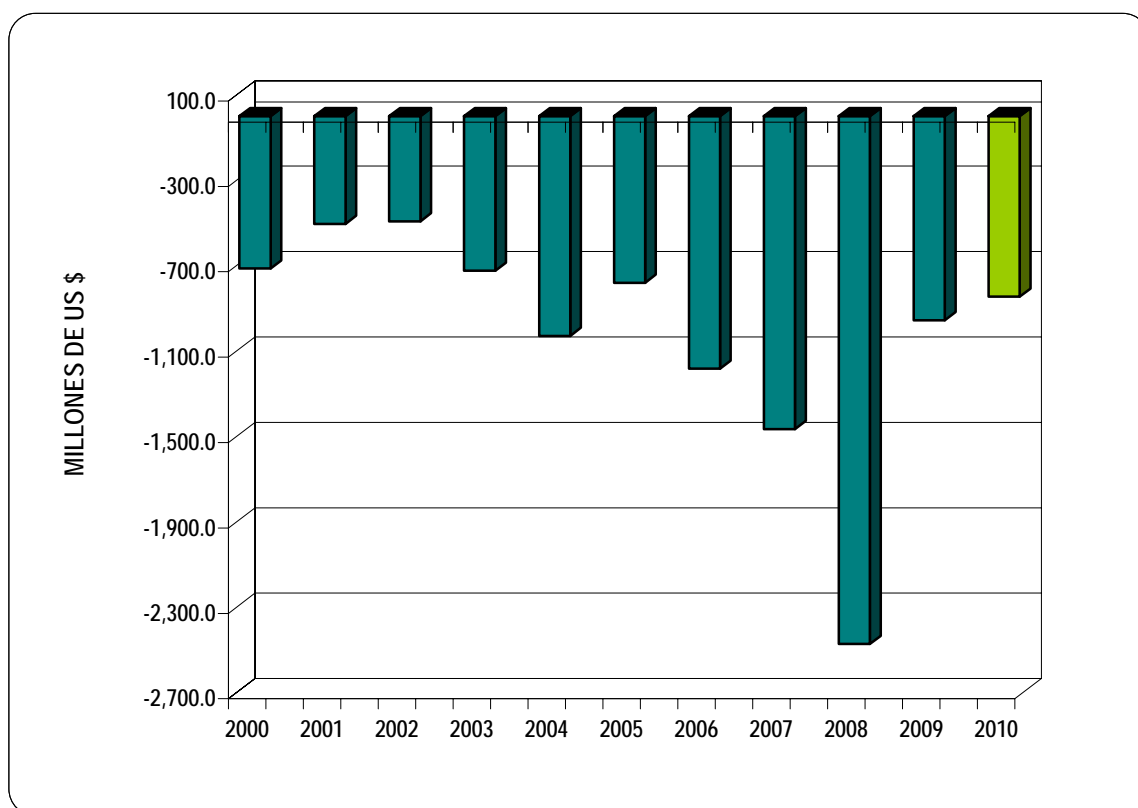
IMPORTACIONES CIF	EMPRESA						2010		
PRODUCTO (MBS)	RELAPASA	PETROPERU	MANU PERU	ZETA GAS	OTROS	TOTAL	MBS	US\$ / BL	MUS \$
Crudo									
Crudo	25,804.42	8,937.09	-	-	0.01	34,741.52	34,741.52	77.46	2,690,939.36
Gases									
GLP	-	-	-	-	-	-	-	-	-
Butano	-	-	-	-	-	-	-	-	-
Propano	-	-	-	-	-	-	-	-	-
Otros gases	-	-	-	-	-	-	-	-	-
Gasolinas									
Nafta Reformada (HOGBS)	-	167.72	-	-	-	167.72	167.72	88.97	14,921.40
Gasolina Motor	-	8.44	60.78	-	-	69.22	69.22	93.30	6,458.75
Gasolina con Alcohol	125.19	834.09	636.27	-	-	1,595.56	1,595.56	94.34	150,525.15
Gasolina de Aviación	-	8.66	-	-	-	8.66	8.66	136.52	1,182.17
Destilados Medios									
Turbo Jet A1 / Keroturbo	101.09	-	-	-	4.99	106.08	106.08	102.64	10,887.88
Diesel 2	735.68	2,176.00	150.51	-	-	3,062.18	3,062.18	94.10	288,163.72
Diesel 2 50 PPM	3,101.96	2,810.49	1,393.25	-	148.98	7,454.69	7,454.69		711,716.56
Material de Corte / Gasoils									
Residuales	268.19	-	-	-	-	268.19	268.19	77.27	20,723.77
Otros									
Solventes	-	-	-	-	23.37	23.37	23.37	201.88	4,718.05
<b>SUBTOTAL</b>	<b>30,136.53</b>	<b>14,942.50</b>	<b>2,240.80</b>	<b>-</b>	<b>177.36</b>	<b>47,497.20</b>	<b>47,497.20</b>	<b>82.12</b>	<b>3,900,236.82</b>
<b>PRODUCTO (MBS)</b>	<b>CASTROL</b>	<b>TEXACO ISOPETROL</b>	<b>MOBIL</b>	<b>SHELL</b>	<b>OTROS</b>	<b>TOTAL</b>	<b>MBS</b>	<b>US\$ / BL</b>	<b>MUS \$</b>
Bases Lubricantes	-	111.12	318.75	283.42	53.05	766.34	766.34	153.13	117,352.60
Acetles Lubricantes	-	26.56	2.47	9.98	208.58	247.59	247.59	315.08	78,011.74
<b>SUBTOTAL</b>	<b>-</b>	<b>137.68</b>	<b>321.22</b>	<b>293.40</b>	<b>261.63</b>	<b>1,013.93</b>	<b>1,013.93</b>	<b>192.68</b>	<b>195,364.34</b>
<b>PRODUCTO (MBS)</b>	<b>CASTROL</b>	<b>TEXACO ISOPETROL</b>	<b>MOBIL</b>	<b>SHELL</b>	<b>OTROS</b>	<b>TOTAL</b>	<b>MBS</b>	<b>US\$ / BL</b>	<b>MUS \$</b>
Grasas Lubricantes	-	11.35	4.43	7.05	17.28	40.12	40.12	313.96	12,595.26
<b>SUBTOTAL</b>	<b>-</b>	<b>11.35</b>	<b>4.43</b>	<b>7.05</b>	<b>17.28</b>	<b>40.12</b>	<b>40.12</b>	<b>313.96</b>	<b>12,595.26</b>
<b>TOTAL IMPORTACIONES CIF</b>							<b>48,551.25</b>	<b>84.62</b>	<b>4,108,196.42</b>
<b>BALANZA COMERCIAL</b>							<b>MBS</b>	<b>2010</b>	<b>MUS \$</b>
							<b>12,547.62</b>	<b>- 67.34</b>	<b>- 844,972.91</b>



## BALANZA COMERCIAL DE HIDROCARBUROS

2000 - 2009

AÑO	SALDO		EXPORTACIONES		IMPORTACIONES	
	MILES DE US \$	MILES DE BLS.	MILES DE US \$	MILES DE BLS.	MILES DE US \$	MILES DE BLS.
2000	-713,198.7	-20,520.8	380,306.5	14,946.9	1,093,505.2	35,467.7
2001	-503,841.0	-16,585.4	402,473.6	20,251.1	906,314.6	36,836.6
2002	-491,929.7	-16,894.7	471,073.7	20,856.7	963,003.4	37,751.3
2003	-723,815.6	-19,919.4	662,644.1	24,637.9	1,386,459.7	44,557.3
2004	-1,028,751.2	-21,978.5	685,696.6	21,881.1	1,714,447.8	43,859.6
2005	-779,785.7	-15,070.2	1,488,065.2	28,542.7	2,267,850.9	43,612.9
2006	-1,181,889.9	-18,437.2	1,602,694.4	25,874.6	2,784,584.4	44,311.8
2007	-1,465,032.3	-19,442.0	2,099,057.5	30,623.5	3,564,089.8	50,065.5
2008	-2,471,700.5	-19,588.7	2,734,627.7	29,974.0	5,206,328.2	49,562.6
2009	-955,207.9	-11,524.9	1,928,705.4	33,465.0	2,883,913.3	44,989.9
2010	-844,972.9	12,547.6	3,263,223.5	61,098.9	4,108,196.4	48,551.3



**EXPORTACION DE PETROLEO CRUDO Y PRODUCTOS DERIVADOS**  
2001 - 2010  
(MBLS)

AÑO	TOTAL	PETROLEO CRUDO/ REDUCIDO	GLP / PROPANO / BUTANO	GASOLINAS / NAFTA	KEROTURBO	DIESEL 2 / BUNKERS	COMBUSTIBLES RESIDUALES	OTROS PRODUCTOS
2001	20,251.1	6,825.8	-	2,769.5	694.3	411.7	9,538.8	11.0
2002	20,856.7	7,819.0	-	2,296.3	1,412.3	279.6	8,909.4	140.1
2003	24,637.9	10,547.8	-	2,259.0	1,586.8	321.3	9,841.9	81.1
2004	21,881.1	6,083.3	494.0	4,835.5	1,584.4	419.0	8,377.8	87.0
2005	28,542.7	4,709.5	1,194.1	9,093.8	2,378.1	531.5	8,631.0	2,004.7
2006	25,874.6	8,706.2	302.0	7,525.5	2,570.2	268.5	5,929.0	573.3
2007	30,623.5	9,996.7	36.3	9,140.9	2,919.1	204.0	7,313.5	1,013.0
2008	29,974.0	6,591.3	199.9	10,024.1	3,321.8	258.0	8,628.1	950.8
2009	33,465.0	6,963.5	3,043.0	12,868.0	3,243.3	275.6	6,658.1	413.5
2010	61,098.9	6,911.2	4,457.7	14,593.2	3,567.9	1,023.8	8,613.0	21,932.2

\* Apartir del año 2004 se comenzó a exportar GLP a través de la Empresa PLUSPETROL

\* Otro productos incluye: Gas Oils, Solventes, Aceites, Aceites Base y Grasas Lubricantes

**VALOR FOB DE LA EXPORTACION DE PETROLEO CRUDO Y PRODUCTOS DERIVADOS**  
2001 - 2010  
(MUS\$)

AÑO	TOTAL	PETROLEO CRUDO/ REDUCIDO	GLP / PROPANO / BUTANO	GASOLINAS / NAFTA	KEROTURBO	DIESEL 2 / BUNKERS	COMBUSTIBLES RESIDUALES	OTROS PRODUCTOS
2001	402,473.6	126,147.8	-	71,295.9	26,315.9	16,634.9	160,792.2	1,286.8
2002	471,073.7	162,245.7	-	63,801.4	52,943.0	9,740.7	173,914.1	8,428.8
2003	662,644.6	266,223.4	-	75,326.4	72,562.7	12,996.7	227,751.6	7,783.8
2004	685,696.6	121,982.2	19,296.7	220,184.9	98,394.3	22,169.9	195,768.8	7,899.8
2005	1,488,065.2	186,898.3	85,003.3	602,729.0	206,899.0	37,611.0	293,356.9	75,567.8
2006	1,602,694.4	465,777.6	25,335.1	544,105.3	236,647.7	26,419.7	254,696.2	49,712.9
2007	2,099,057.5	587,012.9	1,866.8	699,808.2	293,643.2	20,315.2	411,481.2	84,930.0
2008	2,734,627.7	569,374.7	9,130.2	891,543.5	463,407.3	36,455.5	637,837.7	126,878.8
2009	1,928,705.4	353,213.5	114,750.8	757,662.8	264,583.8	25,783.1	364,996.9	47,714.4
2010	3,263,223.5	505,067.3	237,591.2	1,162,129.6	361,207.4	85,371.4	606,390.6	305,466.0

\* Otro productos incluye: Ga Natural Licuado, Gas Oils, Solventes, Aceites, Aceites Base y Grasas Lubricantes

**IMPORTACION DE PETROLEO CRUDO Y PRODUCTOS DERIVADOS**  
2001 - 2010  
(MBS)

AÑO	TOTAL	PETROLEO CRUDO	GASOLINAS NAFTA	KEROTURBO	DIESEL 2 / 50 PPM	MATERIAL DE CORTE	GLP	ACEITES Y GRASAS LUBRICANTES	OTROS PRODUCTOS
2001	36,836.6	27,054.7	377.4	346.3	6,065.2	150.1	2,375.0	464.7	3.0
2002	37,751.3	26,934.9	410.3	1,486.7	4,973.9	562.6	2,862.1	516.0	5.0
2003	44,557.3	30,431.2	322.2	1,155.8	6,869.7	1,446.0	3,492.1	573.4	267.0
2004	43,859.6	30,307.5	361.6	1.3	9,061.8	746.9	2,748.4	597.6	34.7
2005	43,612.9	34,989.8	839.5	0.2	5,772.2	236.7	735.8	708.5	330.2
2006	44,311.8	36,944.0	744.3	4.6	5,588.7	180.2	91.4	721.2	37.3
2007	50,065.5	40,239.1	746.8	6.3	7,004.7	218.0	1,018.6	829.9	2.1
2008	49,562.6	35,477.2	904.0	475.9	10,006.2	315.5	1,409.8	852.4	121.6
2009	44,989.9	36,328.1	1,230.3	351.1	6,047.7	151.3	0.0	874.5	6.8
2010	48,551.3	34,741.5	1,841.2	106.1	10,516.9	0.0	0.0	1,054.1	291.6

**VALOR CIF DE LA IMPORTACION DE PETROLEO CRUDO Y PRODUCTOS DERIVADOS**  
(MUS\$)  
2001 - 2010

AÑO	TOTAL	PETROLEO CRUDO	GASOLINAS/ NAFTA	KEROTURBO	DIESEL 2 50PPM	MATERIAL DE CORTE	GLP	ACEITES Y GRASAS LUBRICANTES	OTROS PRODUCTOS
2001	906,314.6	589,839.3	14,095.9	10,455.3	193,082.7	4,242.8	61,086.7	33,185.4	326.4
2002	963,003.4	646,359.7	14,416.8	48,106.0	143,399.6	13,877.0	63,922.5	32,471.5	450.3
2003	1,386,459.7	867,344.8	13,620.0	45,443.8	257,375.0	46,825.3	106,476.0	41,244.6	8,130.2
2004	1,714,447.8	1,073,195.0	18,826.5	81.4	443,308.5	32,042.7	98,567.4	46,467.6	1,958.8
2005	2,267,850.9	1,696,581.2	56,117.3	29.2	404,417.5	13,256.0	30,991.6	63,957.4	2,500.6
2006	2,784,584.4	2,156,712.9	57,698.5	711.0	453,643.2	11,069.4	4,637.3	97,691.8	2,420.3
2007	3,564,089.8	2,667,649.3	65,219.9	1,105.7	622,078.5	17,020.4	67,026.6	123,669.7	319.7
2008	5,206,328.2	3,379,804.6	102,142.7	67,037.5	1,307,716.0	46,098.0	118,242.6	172,613.2	12,673.7
2009	2,883,913.3	2,150,762.9	90,624.1	24,538.6	457,746.8	12,495.1	0.0	64,680.9	83,064.8
2010	4,108,196.4	2,690,939.4	173,087.5	10,887.9	999,880.3	0.0	0.0	207,959.6	25,441.8